



B a y o u F o l i a g e

A publication of the Armand Bayou Nature Center Volunteers

December 2002

Printing Compliments of Celanese

Vol. 21, No. 12

look AHEAD

December 2002

- 5 Volunteer Board Meeting, 6pm
- 7 Prescribed Prairie Burn Class
- 10 Deadline Bayou Foliage
- 12 Volunteer Meeting and Holiday Party, 6:30pm
- 14 Night Hike - Marie & Odie Asscherick, Paula Thorson, Rhonda Richardson

January 2003

- 2 Volunteer Board Meeting, 6pm
- 7 Deadline Bayou Foliage
- 9 Volunteer Meeting, 6:30pm

**HAPPY HOLIDAYS
AND A
HAPPIER NEW YEAR!!!**

volunteer of the MONTH

Each month we recognize an outstanding volunteer for donating their talent and time to Armand Bayou Nature Center. This December we give our "Thanks!" to Ann Prosser. It is always a pleasure to see Ann's smiling face at the front desk when Jo is out to lunch or taking time off. "Ann is here every Tuesday and has become a real asset to Admissions," Jo says. Originally from L.A., Ann and her husband made many moves due to his Coast Guard duty. The last move they made was from the tip of Manhattan to the Houston area in 1988, where they became ABNC members that very same year. "My husband and I took one of George's birding classes," Ann remembers, "We knew nothing about birding at the time, but just *loved* the class." When Ann found a little spare time, she attended ABNC's Volunteer

Training in fall of 2001. Being a self-proclaimed "people person," Ann became a regular at the Admissions desk soon after. You may also find her out at the farm as an Interpreter. "Even if I spend the entire day alone, I really enjoy it," she says, "It's just so peaceful and relaxing." Ann's volunteering doesn't stop there. She has recently offered to take on the Admissions Coordinator position on the Volunteer Board for 2003. There is only one time slot that Ann won't give up for the Nature Center, and that's every second Thursday of the month. Where is Ann during Volunteer Meetings? Playing Bunco with friends! "I can't give up my Bunco night!" she says. Next time you receive a big smile from Ann at the front desk, let her know how much she means to ABNC!

- James Blueberry

volunteer meeting and holiday party - DECEMBER 12

Our volunteer program for December is the annual holiday potluck dinner. Please bring your spouse or significant other to enjoy the evening with you. This is a wonderful time to visit with everyone. The social begins at 6:30 and dinner will start at 7:00. Turkey and ham will be provided as well as plates, cups,

utensils, and napkins. Coffee and tea will also be available. We ask that you bring an appetizer, vegetable, salad, bread, or dessert dish of your choice that will serve 6.

After dinner there will be a brief meeting to recognize those volunteers going off of the Volunteer Board and to vote in the new members for 2003. We will also

be voting on the 2003 budget. Come out for good food and great company, and to support the new leaders of the volunteers.

- Anne Tincher



a b n c v o l u n t e e r M E E T I N G M I N U T E S

from meeting on November 14, 2002

The guest speaker was Diane Foss of Texas Parks and Wildlife, who gave a presentation on Texas Wildscapes.

Chairman Stan Krauhs opened the business portion of the meeting at 8:15 PM.

The minutes of the October 10 Volunteer Meeting were approved. The Treasurer's report (Ken Russell) will be published in the Bayou Foliage.

Area Reports:

Vice Chair (Anne Tincher)

Volunteers are encouraged to sign up for decorating the auditorium on December 8 from 2:30 until 5 PM. Ed Adams will be coordinating. The Christmas party is scheduled for our next regular meeting night, December 12 at 6:30 PM. Turkey and ham will be furnished, and all volunteers are asked to bring a potluck item. There will be a brief business meeting followed with music entertainment by Mark Kramer and George Regmund.

Weekday Outdoor Education (Jane Bingel)

Volunteers are always needed—please help so we can avoid overworking others.

Weekend Trails (Odie Asscherick)

Volunteer coverage is complete for December.

Weekend Demos (Eleanor Stanley)

As always, additional volunteer help is needed and welcome.

Greeters and Farm Interpreters (Ruby Dilgren)

Coverage has been scheduled for

December, but there are openings in January. This is a good way to accumulate volunteer hours, and the duties are not complicated.

Stewardship (Jim Callan)

The winter burn season is about to begin. A training class is scheduled for December 7. It is necessary to complete the training before working on a prairie burn. Volunteer help is needed to collect California bulrush. These will be temporarily moved to nursery ponds now under construction for eventual transplanting in Armand Bayou next spring during Marsh Mania.

Bayou Foliage (Stan Krauhs for Jim and Sylvia Krzmarzick)

Please contact Jim or Sylvia if you have articles for the newsletter. The normal deadline is the day of the Volunteer meeting, but sometimes it is possible to accept an article a day or two later.

Staff Report (James Blueberry):

Although the Fall Festival was cancelled because of wet condition following many days of rain, 550-600 people came out. A number of volunteers were available to provide demos. Sales of craft items, cookies, and plants totaled over \$800.

James thanked the carpenters of the Facilities Group for completion of the bison viewing platform and the first of two bulrush nursery ponds.

The staff has made a list of

events in 2003. Down on the Farm and Earth Day will not be held next year.

The Volunteer Appreciation Dinner will be held on January 9 at 6:30 PM.

Insurance coverage for the canoes has been secured and the canoe schedule will be resumed.

Ann Prosser was named Volunteer of the Month.

Committee Reports:

Nominations have been made for all board positions for 2003 except for the Weekday Farm Coordinator; no volunteer has agreed to fill that position. A complete list of the candidates will be listed in the Bayou Foliage.

New Business:

Gift to ABNC:

Stan reminded those present that it was decided by vote during the October meeting that the 2003 Budget would include a gift of \$1500 to ABNC for the purchase of a flat bed equipment trailer for prairie burns. However, it is now realized that the winter burn season will begin in a few weeks and the trailer is needed immediately. Stan pointed out that funds are available at this time. ***A motion was made to provide this gift now. The motion was seconded and passed.***

A following discussion concluded that the incoming Volunteer Board could review the financial status and determine if an additional gift to ABNC would be

abnc volunteer MEETING MINUTES(cont.)

from meeting on November 14, 2002

reasonable in 2003.

Events:

Volunteers discussed the handling of cancelled events in the future. The volunteers generally agreed that a contingency plan should be made for each event. Polly Swerdlin suggested that an Events Committee should be formed to provide a more efficient planning organization.

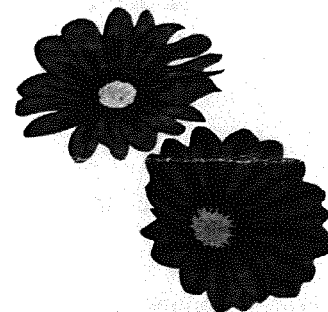
Polly also pointed out that there were many vacant time slots on the Fall

Festival sign up list. This is particularly disappointing since the Fall Festival is our biggest event. It was suggested that a "phone-a-thon" be conducted for each event, since direct contact would probably result in more volunteers.

Announcements (Stan Kraubs): Sign up sheets have been posted for snacks for volunteer meetings in 2003. All volunteers are strongly urged to log all their hours. Volunteer hours contributed is one of the criteria used in competition

for funding and grants. Stan adjourned the meeting at 8:50 PM.

Respectfully submitted, Bill Cooke



h e l p N E E D E D !

Anyone capable of answering telephone and saying "Armand Bayou Nature Center, can you please hold?" is encouraged to contact Jo Evans at the front desk. Anyone who knows Jo is aware of her amazing organizational skills and energy, but she is not Superwoman! She needs lunch breaks just like the rest of us!

JOB DESCRIPTION:

Jo is asking for a 1 hour lunch relief each weekday. This hour can be anywhere between 12 noon and 2:30, as long as she gets an hour to leave the grounds and eat in silence! The duties are simple: answer phones and take messages; answer general questions regarding entrance fees, coming events, etc.; arrive 15 minutes early to get a quick register

and credit card machine training. Jo and the ABNC staff would like to send a big "Thank You!" to the following volunteers who have lent their time: Ann Prosser, Nan Muir, Barb Gillem, Anne Tincher, Dewanna Norris, Jane Bingel, Joan Henderson, Dottie Evans and Martha Hood.

Again, if you are interested or willing to volunteer for an hour to help Jo, contact her at the front desk! The person working the admissions desk is the first face you see when visiting ABNC—Let's work together to ensure that it's not a stressed out one!

- James Blueberry

c a s s e t t e c a s e s N E E D E D !

The ABNC library is in need of any spare plastic cassette holders. If you can donate some, please leave them in the volunteer office with my name on them.

- Martha Hood

r o s t e r C O R R E C T I O N S

Linda Hamlett:

New email address is: indigobtg@yahoo.com

Andrew Hamlett:

New email address is: bachwblr@yahoo.com

22nd ANNUAL MARTYN FARM FALL FESTIVAL**Canceled Fall Festival Weekend**

I wonder does this mean next year we have to label it the "22nd Annual" also? We apologize for the communication snafu. It was AFTER we called to cancel that we realized that more than the usual crowd of visitors would be coming anyhow. And so it was: close to 600! Please forgive me if I leave anyone out. I have to rely on memory for who helped out as we didn't use the sign-up boards as planned.

First off, let me say a big thank you to Jennifer Jones of the Gulf-Tex Feed Store in Pasadena for the loan of eighteen baby chicks and four bunnies, plus their food and equipment to keep them comfy for three overnights. That all by itself was a big hit with the kids. Our thanks to Henry Stanley, Anne Tincher, Sam and Pam Harwell, Lauren Moore, Erin O'Donnell, and Ashley Ray for helping out with them in the Greenhouse.

The Volunteer Booth was placed near the Kanaka Building and I believe that Helen Harger and Eleanor Stanley worked that. Stephania Rogers sold cookies generously donated by several folks. Joe Bryan and Merle Bunde helped Jo Evans and Dick Phelps at Admissions. All in all, over \$800 was added to the Volunteer Treasury!

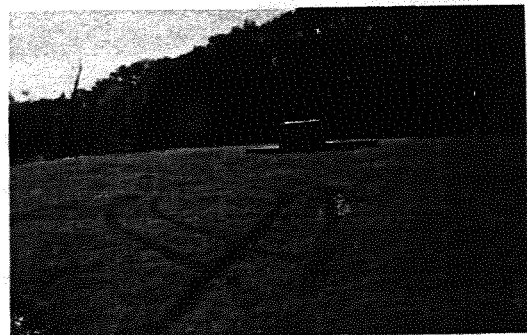
We set up the Rope Making in the Auditorium as the mosquitoes were in force outside. Thanks to Ed Adams and Stan Krauhs. My time with this activity was busy, but enjoyable. We had a steady stream of kids wanting to try it out. Joining us in the auditorium were Joyce Robert's fancy quilting, Clarice Shanks demonstrating how to make felt, and Judy Aycock with her excellent lace work.

The Farmhouse interpreters included Ruby Dilgren and Jane Bingel, with Chris LaChance in the garden area. Tom Scarsella did his blacksmithing, and Marie Asscherick walked the trails.

Thanks BIG Time, folks!

Polly Swerdlin

P. S. If you look closely at the picture, you can see one reason that we canceled the Fall Festival.



view from the CHAIR

That's A Wrap For The Year 2002

A few more weeks and the year 2002 will be history. And what a year it was. It began with the nature center getting a new executive director, Sam Harwell, followed by other personnel changes culminating in James Blueberry becoming the new staff volunteer coordinator. A new volunteer board was installed and changes were promised. The volunteer roster was updated and three new committees were formed: the *Bayou Foliage* Review Committee, the Recruitment Committee, and the Recognition Committee. However, the real fruits of their work are not expected until mid-2003 because they were not fully functioning until this past summer.

Most activities this year were a great success. The rains held off, for the most part, for Creepy Crawlers. But after that the rains came and would not stop, soaking the grounds. Having to cancel Fall Festival was a big disappointment, especially for the volunteer committee chair, Polly Swerdlin. I am sure every volunteer joins me in thanking Polly and her committee for their efforts and

pulling off a bit of a success at the last minute. Hundreds of customers came out for a beautiful weekend, ignoring the "Canceled" signs. We were able to keep a few demos going and an animal petting area, and we sold volunteer cookies, plants, and crafts.

I am looking forward to the annual December potluck dinner meeting with good food and friends. At this meeting we will approve the volunteer budget for 2003 and elect new board members. [See these items elsewhere in the newsletter.] I promise to keep the business meeting short with your help. I want to personally thank each and every volunteer, and especially the members of the volunteer board, for your time and support this past year. Merry Christmas and Happy New Year, one and all.

- Stan Krauhs
Chair, Volunteer Board



staff DIRECTORY

Executive Director	Sam Harwell
Director of Education	
Director of Development	Lynn Shigekawa
Stewardship Coordinator	Mark Kramer
Volunteer Coordinator	James Blueberry
Senior Naturalist	George Regmund
Visitor Services Coordinator	Jo Evans
Front Desk	Dick Phelps
Animal Collections Assistant	Chris Battan
Education Coordinator	Melissa Aguilar
Facilities Coordinator	Ken Lester
Webmaster	Richard Coleman
Accountant	Pat Slaughter/Linda Tanner

Phone 281-474-2551

Email: abnc@ghgcorp.com Web: www.abnc.org

In The Farmhouse Garden

Fall is often considered a transition time, in life as well as in the garden. It is a time to rest and rejuvenate after the heat of summer, or to get reacquainted with Nature after a self-imposed air-conditioned hibernation. It can also be a time to resign oneself to the darker, cooler, duller days of winter, just biding the time until spring awakens all once again. For the gardener, however, it is known only too well that fall and winter in this part of Texas are Nature's way of providing another chance to savor her gifts. So too for the gardener or anyone who is open to Nature's subtle touches, sighs of relief are heard and exuberance sensed from plants that barely hung on through the heat and the downpours. Now is their season to be

reborn. For other plants this is the only time of year they can survive. (Those who were ever fortunate enough to have been Yankees will recognize these as summer plants!) In the Hanson House Conservationscape, the antique roses are spectacular, the Copper Canyon Daisy, Bulbine, Pineapple Sage, Lantana, Calendulas, Pavonia, Barbados Cherry and Violas are blooming or fruiting, and the Chili Pequin is bejeweled with its fiery reds and emerald greens. With its large selection of native plants, the garden also offers wildlife, especially countless migratory visitors, a veritable feast. Other species find shelter and safe haven in the evergreen shrubs, leaf litter, and cool, damp soil. Many early settlers, chose these very plants on display in

the garden. They were unaware of the habitat value they were providing and chose them for their aesthetic or familiar qualities, as they were reminded of families and friends left behind or neighbors seen only a few times each year.

Above all, the fall garden offers a chance to rethink, relearn, and rediscover. Visit the farmhouse garden. It won't be fall forever!

- Chris LaChance

**2002 VOLUNTEER BOARD**

Chair	Stan Krauhs	281-470-2744	krauhs@wt.net
Vice Chair	Anne Tincher	281-486-5167	annealone3@yahoo.com
Secretary	Bill Cooke	281-480-2441	billcooke@msn.com
Treasurer	Ken Russell	281-488-0390	pacloon@aol.com
Stewardship	Jim Callan	281-824-9411	jpcallan@shellus.com
Info Serv & Interp	Ruby Dilgren	281-488-1727	
Admissions	Sally Hall	281-282-0036	sallyh15@juno.com
Weekend Demos	Eleanor Stanley	713-455-1502	
Weekend Trail	Odie Asscherick	832-721-8094	doctorodie@webtv.net
Weekday Farm			
Weekday Outdoor Educ	Jane Bingel	281-554-5069	
Outreach	Laura Bradley	281-992-2604	brad9@flash.net
<u>Bayou Foliage</u>			
Editors	Jim & Sylvia Krzmarzick	281-557-2505	sykkyj@ev1.net
Circulation	Odie Asscherick	832-721-8094	doctorodie@webtv.net

If you have articles for the *Bayou Foliage* you may phone or email them to Jim and Sylvia Krzmarzick (see above).

volunteer BUDGET

ARMAND BAYOU NATURE CENTER VOLUNTEERS

BUDGET - 2003

Income:

Paper Recycling	400.00	
Cookie Sales	400.00	(Note 1)
Volunteer Booth (Fall Festival)	<u>300.00</u>	

Total Income	1,100.00	
--------------	----------	--

Expenditures:

Postage (Bayou Foliage)	475.00	
Bank Service Charge	24.00	
Administrative/Supplies	150.00	(Note 2)
Social Gatherings	60.00	
Volunteer Recognition	300.00	(Note 3)
Gifts for Speakers	<u>50.00</u>	

Total Expenditures	1,059.00	
--------------------	----------	--

Net Increase or Decrease for 2003	41.00	
-----------------------------------	-------	--

Note 1 - Reduced for no "Down on the Farm"

Note 2 - Combined administrative/supplies and contingency lines from 2002 budget

Note 3 - Funds to establish a process, e.g. pins, award prizes, etc. (May be underestimated.)

nominees for 2003 volunteer BOARD

Please be prepared to vote for the Volunteer Board members at the December meeting!

Chair – Stan Krauhs

Vice Chair - Polly Swerdlin

Secretary – Bill Cooke

Treasurer – Eleanor Stanley

Admissions Coordinator – Ann Prosser

Facilities Coordinator – Chuck Snyder

Greeters & Interpreters Coordinator – Judy Schaefer

Outreach Coordinator – Ed Adams

Stewardship Coordinator – Kristen Knoedler

Weekday Farm Coordinator – Vacant

Weekday Outdoor Education Coordinator – Jane Bingel

Weekend Demos Coordinator – Stephania Rogers Weekend Trails Coordinator – Odie Asscherick

Creepy Crawler – Fun in the Rain

Despite the threat of dire weather, Creepy Crawler went forward as advertised. We held our breath, but the rain held off long enough to have a full evening of events on Friday and our guests only missed a few hayrides on Saturday.

If you didn't catch the Barn Show (and many of you couldn't because you were working) Chris Battan and James Blueberry did a tremendous job entertaining the kiddos with their "sister" act. Even Henry Stanley got in the act as "Uncle Bob."

The heroes of the evening were the volunteers who signed up to do the talking animal trail hike. Instead, they were recruited to direct people to the Barn Show which was held in the Greenhouse. Confused yet?? They stood out in the rain and were kind enough to direct folks to the different venues.

Many of our new volunteers pitched in, donned animal costumes, and kept young and old entertained in the

auditorium. As usual there were beautiful masks to be shown off and the face painting was a big hit as always. The farm house porches were overflowing with attendees enjoying their decorated cookies, witches brew and storytelling. Our thanks to our "Farm House Traffic Cop," who kept all of that moving along. Hayrides went smoothly Friday and Saturday due to our very capable line monitor.

Our volunteers helped outside people to provide some outstanding live animal demos in the auditorium and staffs' spouses and family helped to round out our volunteer needs for both evenings. Once again Creepy Crawlers was a success because of all your hard work and dedication. Thank you all so very much.

- Jo Evans

Website of the Month

*North American Bat House Research
Project*

<http://www.batcon.org/bhra/index.html>

Since our little furry flying friends have fled to warmer climes for the winter,

now is the perfect time to prepare for their return and (hopefully) to attract a colony of the voracious mosquito eaters to reside at your home. This website has bat house plans online for those willing to tackle a fun and straightforward project. (If I can follow these plans, ANYONE can!) There is also a list of certified bat house manufacturers for those who would rather choose from a variety of ready-to-install designs. In either case, many other important criteria are presented for the establishment of successful bat houses.

- Jim Krzmarzick



Armand Bayou Nature Center
Treasurer's Report - November 2002

Beginning Balance		\$3587.61
Expenditures:		
Bank Service Charge	2.00	
Postage - Bayou Foliage(October)	30.60	
Postage - Bayou Foliage(November)	39.47	
Total Expenditures		\$72.07
Income:		
Paper Recycling	14.97	
Total Income	\$14.97	
Current Balance		\$3530.51

abnc volunteer DUTY ROSTER

In an attempt to take some of the load off the Coordinators and to help cut down on our "no show" rate, the Bayou Foliage will print a monthly list of folks who have volunteered for various assignments. If you are scheduled for a particular duty and you are unable to attend, please find your own substitute. You may be able to trade weekends or swap a day with someone who has another duty during the month. Use the roster below to find your substitute. Please inform the ABNC desk and the activity coordinator if you trade assignments. Also, if you can fill in any of the blank spots, please call the appropriate Coordinator. When you do your assignment please check in at the front desk with Jo Evans. Thank you.

DATE	11:00 TRAIL Coordinator, Odie Asscherick	2:00 TRAIL Coordinator, Odie Asscherick	GREETERS Coordinator, Ruby Dilgren	FARM INTERP Coordinator, Ruby Dilgren	FARM DEMO Coordinator, Eleanor Stanley	NAT HISTORY DEMO Eleanor Stanley
SUN 12/1	NO TRAIL SUN AT 11:00 AM	Marie Asscherick	Ken Russell	Marjorie Borey	MaryAnn Tucker Basket Weaving	
SAT 12/7	Dina Supple	Ray Parker	Dina Supple	Chris Bingham	Stephania Rogers Rope	Ruby Dilgren Bats
SUN 12/8	NO TRAIL SUN AT 11:00 AM	Merle Bunde	Betty Snider	Stephania Rogers	Tom Scarsella Wood Shop	Hillary Gibbs Study Skins
SAT 12/14	Jim Crabb	Paula Thorson	Dina Supple	Polly Swerdlin	Joyce Roberts Quilting	Anne Tincher Pond Life
SUN 12/15	NO TRAIL SUN AT 11:00 AM	Patti Pennington	Joe Bryan	Dottie Evans		Eleanor Stanley Reptiles
SAT 12/21	Anne Tincher	Rhonda Richardson	Paul Brunkow	Joan Brunkow	Jane Bingel Butter	Eleanor Stanley Lizards
SUN 12/22	NO TRAIL SUN AT 11:00 AM		Judy Schaefer	Susan Williams		Polly Swerdlin Bird Adaptation
SAT 12/28	Jo Ann Carr		Joyce Roberts	Jane Bingel	Irene Ward Wood Stove	Eleanor Stanley Reptiles
SUN 12/29	NO TRAIL SUN AT 11:00 AM	Melanie Weisman	Pat Bates	Anne Prosser	Polly Swerdlin Stereoscope	Patssy Casshion Lizards

Taylor Bayou Tallow Project

Several years ago the nature center aerielly sprayed tallow trees, and they later mulched one area (the 5-Star- Grant 100 acres we burned this last winter) but left trees standing in another. In the area where the trees were mulched, there was very little tallow seedling regrowth, but in the area where the trees were left standing, seedlings have appeared. I am doing my masters thesis on the effect of the tallow mulch on seed germination and seedling growth. An area at Taylor Bayou has just been mulched. I have 240 one-meter test squares: some will have mulch removed, mulch doubled or tripled, and some will have tallow mulch removed and replaced with a different kind of mulch. Next spring, I will count seedlings and estimate grass coverage in each square and evaluate the effectiveness of mulching tallow trees as a restoration method.

- Candy Donahue

A publication of Armand Bayou Nature Center Volunteers

Bayou Polage

Box 58828

Houston, TX 77258

281-474-2551 or 281-474-2552 fax



Address Service Requested

JAMES MURRAY
P O BOX 3950
BAYTOWN, TX 77522-3950

77522+3950 50



Non-Profit
Organization
U.S. Postage
PAID
Seabrook, Texas
Permit No. 632