



Bayou Foliage



FEBRUARY 2000
Vol. 18 No. 2

A PUBLICATION OF THE ARMAND BAYOU NATURE CENTER VOLUNTEERS
"Interested + Involved + Informed"

E-MAIL
BayouFoliage@aol.com

February Calendar

- Feb. 3 Volunteer Board Meeting (6:00 p.m.)
- Feb. 5 Stewardship Saturday (Start at 8:30 a.m.)
- Feb. 10 Volunteer Meeting (6:30 – 9:00 p.m.)
- Feb. 10 Bayou Foliage Deadline
- Feb. 19 Stewardship Saturday (Start at 8:30 a.m.)
- Feb. 19/20 Warm and Fuzzy Weekend

Volunteer of the Year

ABNC's 1999 Volunteer of the Year is Merle Bunde. Merle put in over 450 hours of service last year. He has been a volunteer for ABNC for 4 years. In those 4 years he has taken quite a liking to the trails. He has dedicated a lot of time and expertise to maintaining and creating the Nature Center's trails. Merle also enjoys leading students on trail hikes. Who better to do so than the trail man himself? He also spends a great deal of time doing building and ground maintenance and repairs. In addition, he acts as a greeter, helps with major events and participates in Stewardship Saturdays. On almost any given day if you look off in the background you'll see Merle hard at work.

Merle Bunde was awarded the Volunteer of the Year Award at the January Volunteer Appreciation Dinner. Below was the presentation leading up to the announcement.

ABNC VOLUNTEER MEETING

THURSDAY, FEBRUARY 10, 2000
NATURE CENTER AUDITORIUM

6:30 - Snacks and Conversation:

Get to know one another

7:00 - Presentation

8:00 - Business Meeting

9:00 - Adjourn

A LOOK AT 1999 ACCOMPLISHMENTS AND WHAT'S AHEAD FOR 2000

The program for February will feature a member of the ABNC Board of Trustees and an ABNC staff member. The Board of Trustees member will be presenting an overview of their activities for 1999 and their plans for 2000. The staff member will review the progress made during 1999 and what is planned for 2000. So please join us for a very informative and interesting presentation

TOP 10 REASONS

WHY THIS YEAR'S VOLUNTEER OF THE YEAR WAS CHOSEN

BECAUSE THIS VOLUNTEER

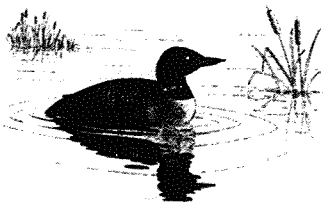
10. IS ACTIVE IN MANY AREAS OF ABNC 9. ALWAYS FINDS SOMETHING TO DO 8. LOVES THE TRAILS 7. IS WILLING TO HELP AT THE LAST MINUTE 6. VOLUNTEERED OVER 480 HOURS 5. WORKS SO QUIETLY IN THE BACKGROUND, THAT STAFF IS AFRAID WE'LL LOCK THIS VOLUNTEER IN. 4. NEVER COMPLAINS, EVEN WHEN BEING ATTACKED BY BUMBLEBEES 3. IS A "HANDYMAN AT HEART" 2. IS OUT HERE SO MUCH AND WORKS SO HARD HE FORGETS WHAT DAY IT IS EVEN WHEN THE CALENDAR IS RIGHT INFRONT OF HIM. And the number 1 reason why this year's Volunteer of the Year was chosen 1. HAS AN EVER PRESENT SMILE AND IS KNOWN AS "THE ANVIL"

When Merle received the award he seemed shocked and humbly replied, "There are so many other people that deserve this award". Right there is a perfect example why he deserves it. Merle also claimed that he just really loved doing the work. It definitely shows.

ABNC is so lucky to have such a genuine and dedicated volunteer. The difference you have made to the nature center is greatly appreciated. Merle, thank you!

HAPPY BIRTHDAY

Kathleen Crabb	Feb. 1	Geri Ross	Feb. 1
Patricia Martin	Feb. 7	Stephania Rogers	Feb. 17
Ed Adams	Feb. 18	Ray Parker	Feb. 19
Chris Bingham	Feb. 22	Marian Higgins	Feb. 23
Mark Kramer	Feb. 25	Hanna Drago	Feb. 26



Printing
Compliments
of Celanese

MINUTES OF THE ABNCV MEETING THURSDAY, JANUARY 13, 2000

Ed Adams called the meeting to order and proposed that the Treasury Report be approved as written; it passed; checking balance 2599.81 + savings balance 618.81 = current assets of 3218.62. Helen Hodges, Vice-President/President Elect of the ABNC Board of Trustees, advised those present of the meeting time for the Board of Trustees. She thanked the volunteers for making good things happen. Numbers are up; she invited all to come to the trustee meetings to get to know one another better.

Anne Tincher is looking for new teachers for Weekday Trails; she will train. Stephania Rogers needs teachers for Weekday Farm. Ruby Dilgren announced that George Regmund is holding a refresher class for weekend trail guides on Sunday, 1-23-00 at 2pm; sign up is limited to 15-20 people. Katarina Grundy announced that weekend demos include farm and natural history; she needs volunteers for Warm and Fuzzy on 2-19-00. For Outreach, Ruby reported that we have had a lot of requests; call Jane Bingel; we can use more people; we customize programs and can always use ideas; Ed said that 200 people were reached in 3 trips to Pasadena. Christine Naspinski announced that we need more people for Interpretation; you can buddy to learn; you can also train in the new volunteer training session. Ken Russell enticed everyone to Stewardship by saying that you haven't lived until you are knee deep in the mud and that it is better than tallow whacking. If you would like to help with Admissions, see Joan Henderson.

Kim Wasserman announced that the volunteer training schedule is available; volunteer board coordinators are asked to attend on 2-5-00; at volunteer orientation, 30 people showed up. The dinner tonight is for the staff to show appreciation for the volunteers; we are becoming a team: staff, volunteers, and Board of Trustees. The volunteers were recognized according to volunteer hours contributed; all were given certificates of appreciation; the hours ranged from 48 hours to 659 by Ann Brinly and 790 hours by Paula Kennedy. As a student volunteer, Amanda Newton, was recognized. Christine Naspinski is the volunteer of the month for having put in 40 hours and being on the volunteer board after being a volunteer for only 3 months. Merle Bunde, who received the volunteer of the year award, got a standing ovation; he says that it is all fun and that he likes doing it.

Christine Ribeiro has volunteered to pick up used paper for recycling from the Copy Stop, once a week. Brian Zemba invited everyone to join the Johnson Space Center Astronomical Society; they meet on Fridays at 7pm in the old LPI building at 3600 Bay Area Boulevard; there are no dues. Brian will set up the ABNC telescope for volunteers on 1-20-00 from 8pm to 10pm to view the planets and the total lunar eclipse. Jane Bingel announced 3-25-00 as Down on the Farm; we need volunteers for 2 hour shifts. Trash Bash is the same day. Ed said that George Regmund sent word that you can put down .5 hours in CE credit for tonight

for bird life, providing that you eat the chicken. John Jacob expressed thanks to all the volunteers on behalf of Clean Water for Armand Bayou; John introduced Marissa Sipitz who replaced Colin; Marissa is very excited to be here and wants to meet all the volunteers; she needs 6 volunteers to help at the Earth Day festival. Ephriam welcomed Marissa and said that the staff had been working for 2 days to get ready for the volunteer appreciation dinner; the staff appreciates all that the volunteers do. Mary Alice Trumble and Chris LaChance attended the Bayou Preservation Association Conference; Cliff Meinhardt serves in that organization also; see Ephriam for more information. All are encouraged to attend the annual membership meeting on 1-22-00 at 10am where long-range plans will be showcased. Ed expressed thanks to Mark Kramer for the oysters Markafella; see the Calendar of Events for Y2K. Keshia announced that 1-22-00 will be her last day to work as a staff member; she will join us as a part of the volunteer group. The meeting was adjourned.

Respectfully submitted,
Linda Hamett/Joan Henderson

CONTINUING EDUCATION

The continuing education classes will be announced at the February meeting. I will be distributing a poll before the volunteer meeting to determine what continuing education classes and/or speakers are of interest to the volunteers. If you are unable to attend the meeting and would like to make a suggestion, please drop me a note in my box in the volunteer office, call me at (281-326-3574) or email me at Lchrisrib@aol.com. Thanks in advance for all your suggestions.

Christine Ribeiro

VOLUNTEER OF THE MONTH

Each month an ABNC Volunteer is recognized for his or her outstanding service to the Nature Center. This month's special volunteer is Christine Naspinski. Christine has a B.S. Degree in Chemical Engineering from Penn State University. She is currently a Process Engineer at Fina Oil & Chemical.

Christine and her husband, Ed Naspinski, came to ABNC in the Summer 1999. By September she was volunteering as a greeter. She has also given a considerable amount of time to ABNC's special events like Creepy Crawlers and Fall Festival. Christine is a new volunteer but she has already put in 40 hours of service and is holding a volunteer board position. ABNC is very lucky to have a volunteer with such ambition.

Thanks Christine. Your time and dedication are greatly appreciated.

STAFF REPORT FROM THE STEWARDSHIP DEPARTMENT

ABNC began managing the original 1900 acres along Armand Bayou in 1977. During that time period most conservationist believed that fencing a piece of property and protecting it from any further human impacts was adequate to keep a wildlife preserve healthy. However, over time, it began to become recognized that the rich diversity of plant and animal species was slowly dwindling. An invasion of non-native plant species began to displace the historic plant community. As diversity in the plant community declines, so often does diversity in the animal community decline as well. Additionally, intertidal marsh habitat has disappeared at an alarming rate over the past four decades, due largely to subsidence. Over 90% of the original marsh habitat that once lined the bayou is gone today. This habitat loss and habitat degradation has had a profound impact on the preserve.

Today conservationists are taking a more active role in ecosystem management. The Master Plan of the nature center describes the primary stewardship goal as to return the landscape of the preserve to its pre-European condition. Returning the land to this state is a very ambitious goal. The habitat degradation that currently exists in so many parts of the preserve took many decades to reach its current state. The restoration process will take time as well.

The "active management" projects that are currently underway are very successful, due in large part to the continued efforts of a dedicated team of Stewardship Volunteers. This restoration team typically shows up to help with restoration projects on the first and third Saturday of each month. Simply put, without the ongoing efforts of this group, most of the major restoration projects could not have been successfully completed. Following are some of the accomplishments of the Stewardship Volunteers in 1999.

MARSH RESTORATION

The CMP Grant, Remembering and Restoring, was completed on December 31, 1999. In this grant ABNC Stewardship Volunteers built protective marsh fencing, and planted 10,850 single stems of smooth cordgrass, 500 stems of California bulrush, and 150 propogules of Widgeon grass. This makes for a combined total of 2.6 acres of marsh created by ABNC Volunteers in 1999.

PRAIRIE RESTORATION

Controlled Burning – Stewardship Volunteers assisted with six prescribed burns in 1999. A total of 150 acres had prescribed fire applied to them during the 1999 burn season.

Prairie Plant Reintroduction – Stewardship Volunteers planted 360 climax prairie grasses in 1999. Many of these grasses were once the dominant species in the prairie, but today are locally rare. Three to five gallon plantings of Eastern gama grass, Switchgrass, Big bluestem, and Indian

grass were planted on both east and west sides of the preserve.

My hat is off to all those who have given so freely their time to make this last year so successful and rewarding. A special thanks, to Volunteer Stewardship Coordinator Ken Russell for all his help during the past year. Happy trails and see ya on Stewardship Saturday.

Mark Kramer

DOWN ON THE FARM MARCH 25, 2000

Fall Festival has come and gone and it was a great success. Again, thanks to all of you for your help, couldn't have done it without you!

Now it's time to get ready for DOWN ON THE FARM 2000. Needless to say we again will need your help. This is a much less hectic event but also is a popular attraction with the public. It is only one day, Saturday, March 25, from 12 – 5 p.m., for the public, but for us volunteers from 11:30 to 5:30 so that we can get ready and close down.

You may be hearing from Jane Bingel for activities at the farm site, Christine Naspinski for greeters, or possibly Lynn for help in distribution of flyers to different locations. Of course, feel free to contact these folks before they have to ask.

The Houston Livestock Show & Rodeo is coming back with more folks! Also returning are the bunch of pettable baby goats, quilters, weavers, lacers, horses, and of course Pasadena ISD's own young adults demonstrating sheep sheering. However the milking cow will not be here this year, as it is already committed to another event, but we will have cattle there for viewing.

Demonstrators will be: butter churning, cheese making, farm house interpreter, farm garden interpreter, a hay stack attender, rope making, vegetable garden interpreter, and cooking on the wood burning stove. There also are other activities that you can participate in. All the activities will be in the sign up sheets. These will be in the volunteer office. Oh yes, time slots will be in two hour shifts, 11:30-2:30 or 2:00-5:00.

There will be food furnished by the same caterers from last year, so don't worry about lunch, just bring your change.

So come join us; have fun, help out, and make this the best Down on the Farm ever! We're looking forward to seeing and working with you. Thanks again for your help both past and future.

Chair
George Regmund

Coordinator
Becky Brignac

Event Volunteer Coordinator
Jane Bingel

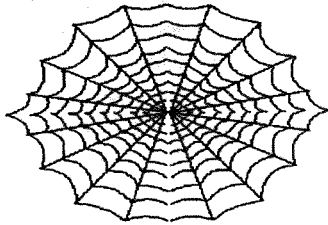
1999 FALL EVENTS WRAPUP

THANKS FOR THE TURN OUT AT OUR FALL EVENTS

The busy fall event season is now well behind us and I would like to offer my great thanks to all of the ABNC volunteers who assisted in the planning and execution of the Fall Festival and Creepy Crawlers.

CREEPY CRAWLERS

With your help, we had a great Creepy Crawlers event with over 875 participants. My job as staff lead on planning the event was made so much easier because of your willingness to sign up. Many of you had worked "Creepy" before and your experience made the event really go smoothly. And for newer participants, your help was invaluable. Special thanks to the area chairs and to everyone who helped.



Lou Wheatcraft and all the trail guides: Martha Hood, Marianne and Brian Phillips, Ken Russell, Vicki Schuckart, Judy Huston, Ross and Scot White, Ray Parker, Jim Crabb, Ed and Christine Naspinski, Eric Duran, and Melanie Weiseman. Bill Howe on hayrides. To the Hay Ride Traffic Controllers: Jody and Ramon McKinney, Joe Clem, Stan Krauhs and Doug Barfoot. Face painters: Zel Arbuckle and Irene Ward. Eleanor Stanley and the children's crafts crew: Teresa Phillips, Kristen Knoedler, Kathleen Helmore, Cherry Barfoot and Dottie Evans. Henry Stanley was a great Barn Show Doorman. Paula Kennedy for being such a good witch in the Barn Show. Ed Adams who took care of the trail characters. Witches Brew servers Jane Bock and Chris Bingham. Cookie decorating with: Cathy Jett, Stephania Rogers, Ruth Elder, Shirley Potter and Ruby Dilgren. Farm House Traffic Witch Polly Swerdlin. Dan and Jen Pelletier, Drew Potter and Paula Thorson with the Hay Stack Candy Dive. Christine Ribeiro for a great job at admissions. Larry Veale with his great Indian stories. Moooooo chas gracias to Susan Hesley as the Great Pumpkin, and everyone's favorite cow. Katerina Grundy as the Great Pumpkin as well.

To everyone who worked Creepy Crawlers; Thank you so much!

FALL FESTIVAL

Fall Festival probably requires more volunteer efforts than any single activity that takes place at ABNC. Without all your help, this event just would not happen. Greatest thanks to all the people who chaired the various major areas of festival operations and took charge of planning activities, lining up other volunteers to help within those areas and organizing materials to use for the various activities.

So many members of the volunteer staff contributed to the festival that space will not allow me to list everyone individually, but the Nature Center staff and I owe each and every one of you who helped a GREAT BIG THANK YOU for all your hard work. Your contribution to the center as a participant in this giant event helps us tremendously. Also, the planning work done on the Festival by Chris LaChance and Mary Alice Trumble, for this year as well as previous years, made the work of the 1999 Fall Festival Planning committee so much simpler than it would have been otherwise. These two ladies have put much extra effort into making the Festival such a good event, adding new ideas, finding new demonstrators, and streamlining operations. They are owed extra thanks for the years of work they contributed to this event. Thank you all very much.

George Regmund

Anyone Remember This Logo?



VOLUNTEER HOURS FOR 1999

1-50 Hours:

Pat Bates
 Cherry Barfoot
 Doug Barfoot
 Mary Barton
 Patsy Baukman
 Paul Baukman
 Jennifer Bingel
 Chris Bingham
 Helen Burton
 Herman Burton
 Patsy Cashion
 Laurie Choate
 Carl Cognata
 Fran Cognata
 Marilyn Collings
 Kathleen Crabb
 Emma Crabb
 Chris Davis
 Eric Duran
 Emily Egan
 Ruth Elder
 Cindy Eppelheimer
 Shelly Garza
 Henry Gibbs
 Hilary Gibbs
 Russell Gibbs
 Pat Grimes
 Carol Harper
 Keely Hartsfield
 Eleanor Haskew
 Dekka Hassey
 Bob Hendrix
 Laura Hendrix
 Autumn Holland
 Kay Jenkins
 Lorraine Kerneckel
 James Kerneckel
 Veronica Kovach
 Stan Krauhs
 Jean Kruse
 Larry Kruse
 Chris LaChance
 Scott Lewis
 Carol MacGregor
 Ramon McKiney
 Sue Manlet
 Diane McMahan
 James McMahan
 Dennis Minor
 Janet Miller
 Ed Naspinski
 Christine Naspinski
 Alan Winger
 Melanie Weisman
 Ron Natole
 Dewanna Norris
 Eldine Owens

Mike Owens
 Julie Oxley
 Louise Peck
 Jennifer Pelleier
 Patty Pennington
 Marianne Phillips
 Gary Pinkerton
 Andrew Potter
 Helen Powell
 Azar Rejale
 Deborah Ritter
 Edward Roberts
 Joyce Roberts
 Nora Roberts
 Vicki Schuckhart
 Cathy Searcy Jett
 John Siptak
 Paula Thorson
 Lars Turner
 Larry Veale
 Ross White
 Scott White
 Jim Yeager
 Mary Yurkovich
 Danny Yancey
 Ingrid Norris
 Landon Hatch
 Fred Vickers
 Patricia Bates
 Fred Henderson
 Meera Yadav
 Debby Reichert
 Jim Thompson
 Brian Zemba

51-100 Hours:

Dick Benoit
 Jane Bock
 Paula Brunkow
 Joan Brunkow
 Joe Bryan
 Marilyn Clark
 Dottie Evans
 Susan Hesley
 Judy Huston
 Kristen Knoedler
 Patricia Martin
 Dan Pelletier
 Shirley Potter
 Geri Ross
 Joan Shack
 Judy Sharp
 Chuck Snyder
 Karen Sommer
 Anne Tincher
 Penny Woodward
 Martha Hood
 Bill Howe

Susan Williams

101-150 Hours:

Zel Arbuckle
 Jim Crabb
 Pat Doerr
 Colleen Ecord
 Katerina Grundy
 Linda Hamlett
 Jody McKinney
 Cris Santiago
 Tom Scarsella
 Mary Alice Trumble
 Irene Ward
 Lou Wheatcraft
 Patrick Wormick

151-200 Hours:

Marjorie Borey
 Hanna Drago
 Barbara Hill
 Christine Ribeiro
 Eleanor Stanley

201-250 Hours:

Becky Brignac
 Andrew Hamlett
 Wanda Hayden
 Stephania Rogers
 Paul Shack
 Polly Swerdlin

251-300 Hours:

Joan Henderson
 Ken Russell

301-350 Hours:

Joe Clem
 Ruby Dilgren
 Mary Ann Tucker

351-400 Hours:

Ed Adams

401-450 Hours:

Jane Bingel
 Roland Borey
 Jim Edwards

451-500 Hours:

Merle Bunde

659 Hours:

Ann Brinly

790 Hours:

Paula Kennedy

The total number of reported hours for 1999, was 12,380.

THANK YOU

Thank you to all the ABNC Volunteers for making 1999 a very successful year for ABNC. Let's keep up the great team work in 2000.

Kim Wasserman

THANK YOU

FOR

VOLUNTEERING

FOR

ARMAND BAYOU
 NATURE CENTER



VOLUNTEER TRAINING SCHEDULE FEBRUARY 2000

FEBRUARY 5th

INTRO TRAINING

TIME	TRAINING EVENT	TRAINER
9:00	Registration/Breakfast	Kim/Volunteer Board
9:30	Welcome/Ice Breaker	Kim
9:45	Lab	Kim
10:00	Trail Hike/Boat Ride	Lou/Mary/Jonathan
12:00	Lunch	
12:30	Tour of Prairie/Hayride	George or Mark
1:30	Tour of Farm	Polly
2:30	Tour of Facilities	Kesha/Patrick
3:15	End	

FEBRUARY 12th

VOLUNTEER TRAINING

TIME	TRAINING EVENT	TRAINER
9:00	Animal Keeper	Jonathan
11:00	Facilities/Maintenance	Patrick
12:00	Admissions/Greeter	Kesha/Christine N.
1:00	End	

FEBRUARY 19th

EDUCATION TRAINING

TIME	TRAINING EVENT	TRAINER
9:00	Trail Interpretation	Lou
10:30	Farm House Interpretation	Lou/Marjorie
12:00	Lunch	
12:30	Animal Groups	Jonathan
1:30	Pond Study Demo	Anne Tincher
2:00	Animal Demos	Joanna W.
3:00	End	

ABNC VOLUNTEER BOARD FOR 2000

Ed Adams	Chair
Christine Ribeiro	Vice Chair
Linda Hamlett	Secretary
Paula Kennedy	Treasurer
Ken Russell	Stewardship
Christine Naspinski	Interpretation
Jane Bingel	Outreach
Joan Henderson	Admissions
Katerina Grundy	Weekend Demos
Ruby Dilgren	Weekend Trail
Stephania Rogers	Weekday Farm
Anne Tincher	Weekday Trail
Andrew Hamlett	Newsletter

VOLUNTEER DUTY SCHEDULE - FEBRUARY 2000

In an attempt to take some of the load off of the Coordinators, and to help cut down on our "no show" rate, a list of the persons who have volunteered for various assignments will be printed in the *Bayou Foliage* each month. If you are scheduled for a particular duty and you are unable to attend, please use this schedule to try to find your own substitute. You may be able to trade weekends, or swap a Saturday for a Sunday with someone who has the same duty another time during the month. If you do trade, please be sure to call the appropriate coordinator and the ABNC desk to inform them

DATE	11:00 TRAIL	2:00 TRAIL	INFO. SERVICES	FARM INTER.	FARM DEMO	NAT. HISTORY EXHIBIT
Sat. 2/5	Meera Yadav	Melanie Weisman	Danny Yancey	Paula Thorson	Irene Ward (Wood Stove)	Rudy Dilgren (Opossums)
Sun. 2/6	--	Stan Krauhs	Ken Russell	Sandy Parker	Mary Ann Tucker (Basket Weaving)	Cathy Searcy Jett (Snakes)
Sat. 2/12	Jim Crabb	John Siptak	Mary Yurkovich	Janet Miller	Ed Adams (Rope Making)	Eldine Owens (Snakes)
Sun. 2/13	--	Ray Parker	Gerl Ross	Polly Swerdlin	Larry Veale (Indian Crafts)	Eleanor Stanley (Alligators)
Sat. 2/19	Louise Peck	Martha Hood	Joan Shack	Diane & Jim McMahon	Stephania Rogers (Stereoscope)	Louise Peck (Owls)
Sun. 2/20	--	Stan Krauhs	Mary Barton	Jennifer & Dan Pelletier	Jane Bingle (Cheese)	
Sat. 2/26	Ramon McKinney	Michael & Edline Owens	Susan Williams	Jane Bingle	Irene Ward (Wood Stove)	Pat Doerr (Feather)
Sun. 2/27	--	Merle Bunde	Doug Barfoot	Cathy Searcy Jett		Zel Arbuckle (Reptiles)

IF YOU CAN FILL IN ANY OF THE BLANK SPOTS, PLEASE CALL THE APPROPRIATE COORDINATOR. THANKS!

"Please Note: The Nature Center will be closed in 2000 on these dates: Memorial Day - Monday, May 29, Fourth of July - Tuesday, July 4, Labor Day - Monday, September 4, Thanksgiving Day - Thursday, November 23, Christmas Day - Monday, December 25, New Year's Day - Monday, January 1, 2001"

2000 VOLUNTEER BOARD

	Home	Office
Ed Adams	Chair 281-487-3033	
Christine Ribeiro	Vice Chair 281-326-3574	Joan Henderson Admissions 281-291-0453
Linda Hamlett	Secretary 281-487-1268	Katerina Grundy Weekend Demos 281-286-7554
Paula Kennedy	Treasurer 281-479-7615	Ruby Dilgren Weekend Trail 281-488-1727
Ken Russell	Stewardship 281-488-0390	Stephania Rogers Weekday Farm 713-473-4329
Christine Naspinski	Interpretation 281-291-9513	Anne Tincher Weekday Trail 281-486-5167
Jane Bingle	Outreach 281-554-5069	Andrew Hamlett Newsletter 281-487-1268
		email: BayouFoliage@aol.com 281-998-7317/Fax

ARMAND BAYOU NATURE CENTER
8500 Bay Area Blvd.
P O Box 58828
Houston, TX 77258
(281) 474-2551

ADDRESS CORRECTION REQUESTED

Non-Profit
Organization
U.S. Postage
PAID
Seabrook, Texas
Permit No. 532